

NORTHERN CALIFORNIA GEOLOGICAL SOCIETY



A TEACHER' WORKSHOP NCGS FIELD TRIP FOR THE NATIONAL EARTH SCIENCE WEEK

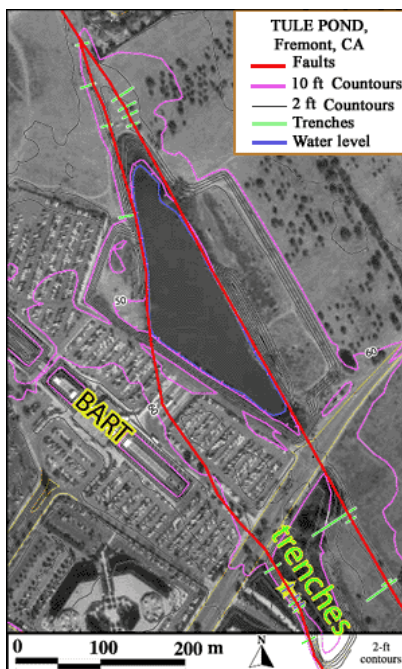
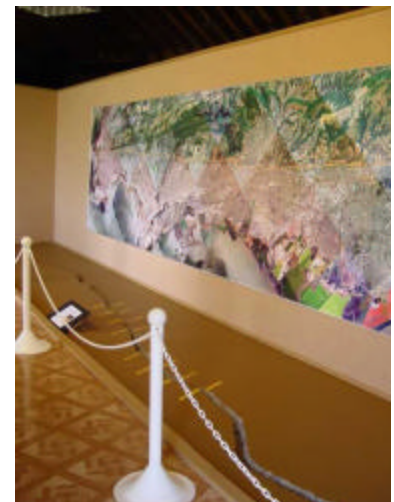
Saturday October 25, 2014, 9am - 3:30 pm

The Hayward Fault – Identifying Urban and Natural Features in the East Bay

Leader:

Dr. Joyce R. Blueford, Math Science Nucleus
with Dr. Ray Sullivan, emeritus San Francisco State University

Over the last million years, the natural beauty of Fremont has been shaped by the Hayward Fault. This teacher workshop will start at Tule Ponds at Tyson Lagoon Wetland Center and end up at the Fremont Earthquake Exhibit in Central Park. Discover the “fault creep” and off sets as we walk along the Hayward fault and explore the dramatic faulting effects in both a natural and urban environment. Learn how we use the measurable movements to incorporate into lesson plans.



Both these facilities are part Fremont Learning Corridor that trace the Hayward Fault from Fremont to Union City. The Math Science Nucleus offers a host of field trips in this area. Lesson plans on the geology and natural history along the Hayward Fault (and correlated to the Next Generation Science Standard) will be illustrated.

To learn more about both areas please consult the Math Science Nucleus website (<http://msnucleus.org>) .NCGS is hosting a BBQ lunch at Tule Ponds. For registration and/or additional information please email - blueford@msnucleus.org

Co-sponsored by Math Science Nucleus

